



Intelligent Blocker
Ice 900

Expanding the Capabilities of the Edger

Blocking method	Motor drive
Display	8.4-inch SVGA color LCD touch panel
Interface	4 PS-232C, 1 LAN (10 / 100 Base-T)
Power supply	AC 100 to 230 V / 230 V 50 / 60 Hz
Power consumption	50 VA
Dimensions / Weight	256 (W) × 367 (D) × 352 (H) mm / 8 kg 10.1 (W) × 14.4 (D) × 13.9 (H) " / 17.6 lbs.
Standard accessories	Spare fuse, Interface cable, Stylus pen, Power cord, Table for shape imager, Small diameter lens holder
Optional accessories	Barcode scanner, USB flash drive

Specification and design are subject to change without notice for improvement.





The Ice 900 Brings You Advanced Blocking

■ New Graphic Design

“Smart screen” design provides the operator with information bar and on-screen tutorial for ease of use.

■ Touch LCD Screen

Layout and grinding conditions are easily entered on the color-coded 8.4” SVGA display.

■ Twin Jog Dial

In addition, data can also be entered by the use of the twin “quick jog” dials. One dial moves the cursor through the fields, while the other is used to enter the value.

■ Tiltable Display

A unique Tilt Display allows the LCD operation screen to be viewed from 27° to 60° from vertical, making it ergonomically friendly whether sitting or standing.

■ Motorized Blocking

The all new motorized lens blocking process takes only two seconds, increasing productivity.

■ Integrated Shape Imager (ISI)

The ISI function photographs any demo lens, including those for rimless drill mounts, and identifies hole position. The function is supported by a “Wizard Tutorial” directly on the screen of the unit, including computer generated renditions of its operation.

■ Lens Stage

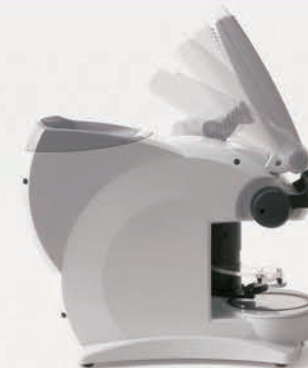
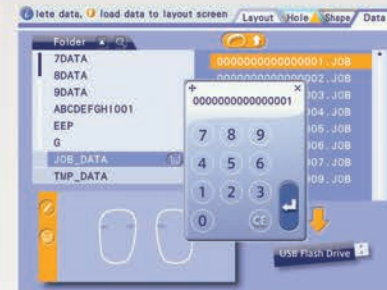
By continuously applying upward stabilizing pressure, the front base curve of the lens is kept stable with reference to the lens stage. This maintains a horizontal blocking surface yielding the highest blocking precision.

■ Data Management

The data management feature allows for storing, searching, and recalling of traced data. Moreover, this software enables the operator to send data to a lab through an internet porthole or, in lab environment, directly to an LMS.

■ Accessory Tray

An accessory tray is provided to store small items. All necessary attachments are stored under the tray.



System Configurations

The Ice 900 can be connected with any Nidek's current Lens Edgers.

*LE-9000 and LE-9000Express are also compatible.



Lex 1000 + Lex Drill + Ice 900



Le 1000 + Ice 900



ME-1000 + Lt 910 + Ice 900