

NEW

LEX-1200

LENS EDGER



 **Santinelli**[®]
INTERNATIONAL

800.644.3343 | www.santinelli.com

LEX-1200 LENS EDGER

NEW

On-board High-Curve "XtremeD™" Tracer



Wrap Frame Tracing

- Highly accurate tracing by unique 3D measurement mechanism
- High-curve frame trace capability
- Dust resistant



Pattern Tracing

Bespoke Bevel Features



Custom Bevel Profiles

- Multiple custom bevel pre-sets including asymmetrical lens bevel profile allows processing a wider range of challenging frames

Auto Blocking Mode

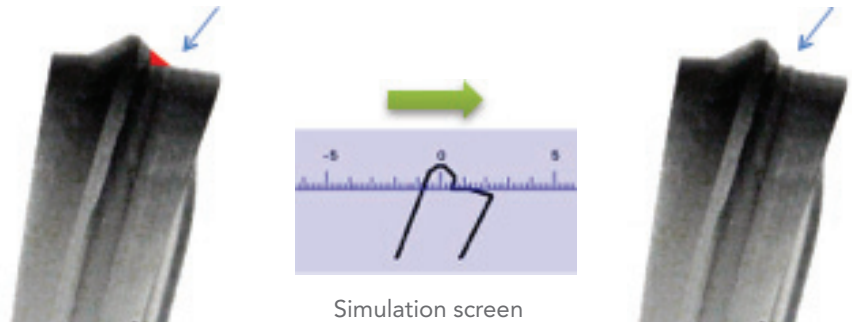


High-Curve Customization

- Allows operators to favor high-curve bevel profiles of wrap frames to be fitted with even lower base curve lenses, while maintaining eyewear aesthetics

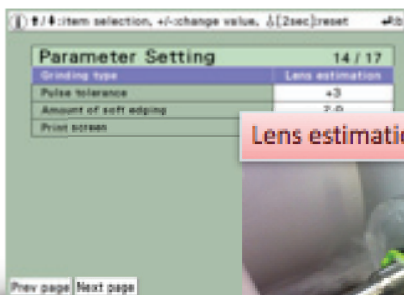
New Semi Step Beveling

- Allows for insertion of lenses into "non-Rx-able" type, safety sportswear



Simulation screen

New Grinding Process Control



Lens estimation type

- Calculates cycle-grinding time by optimizing lens-load exertion to grinding wheels
- Improves grinding speed while maintaining axis quality, even with super A/R coated lenses