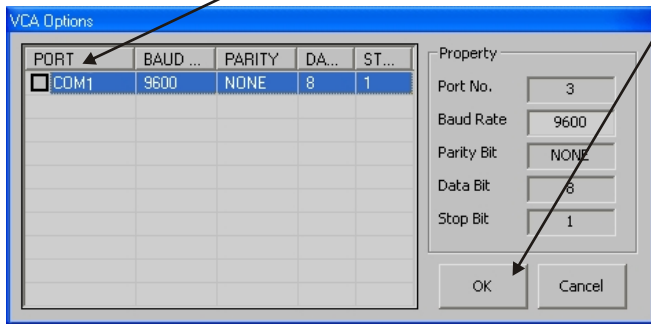
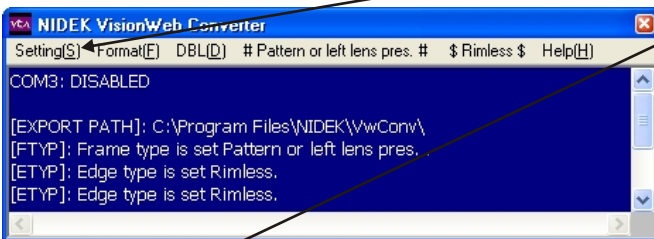


The Visionweb Converter is a program that runs on a Windows computer for the purpose of creating Visionweb trace files from an LT-900, ICE-9000 or LE-9000. Before proceeding, please read: “**How Do I Configure an LT-900 tracer to run with Visionweb**” or, “**How Do I Configure an ICE-9000 to run with Visionweb**” or, “**How Do I Configure an LE-9000 to run with Visionweb**”.

Installation

- 1- Download **NIDEK\Visionweb Converter** (<http://www.santinelli.com/support/downloads/vwconv.zip>) and save the file to a temporary folder on your computer.
- 2- Extract all the files into the same temporary folder.
- 3- Run **Setup.exe**. Install Shield wizard will appear.
- 4- Extract all the files into the same temp folder.
- 5- Click **Next**.
- 6- Enter **Username** and Organization information.
- 7- Click **Next**. **Destination folder** will appear.
- 8- Click **Next**. **Ready to install** will appear.
- 9- Click **Next**. The converter will install onto your computer.
- 10- When Install Shield is complete, click **Finish**
- 11- Start the Visionweb Converter

- 12- Click **Setting\Com Port**
- 13- Click the checkbox in front of the com port that you have connected to your tracer.
- 14- Click **OK**



To create Visionweb trace files, please read “**How to Use the Visionweb Converter**”