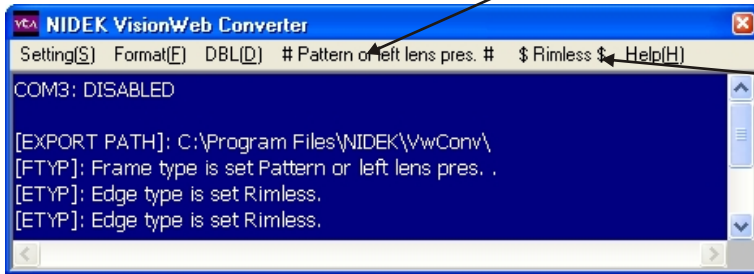
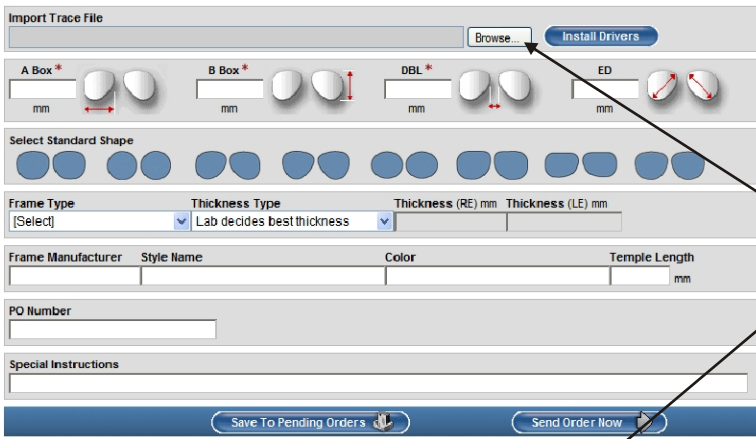


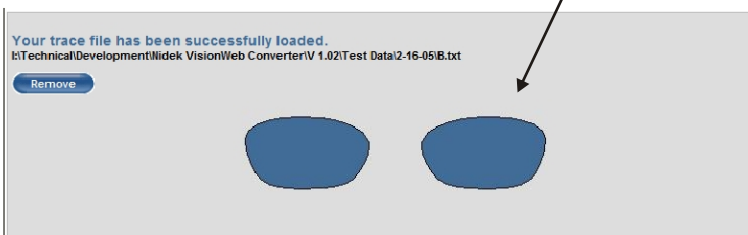
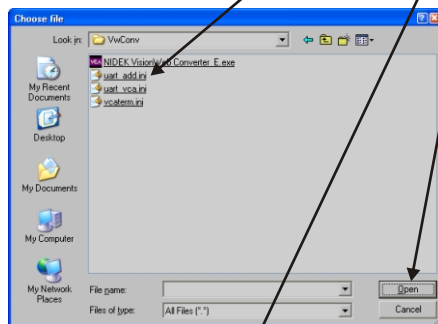
- 1- Open the Visionweb Converter
- 2- Click **?Frame Type?**. **Plastic, Metal Pattern** will appear on the sub-menu.
- 3- Select the type of frame (**Plastic, Metal or Pattern...**) That you will trace.
NOTE: If you select **Pattern**, you must also enter **DBL** or **FPD** measurement in the **DBL** menu.



- 4- Click **?Edge Type?**. **Bevel, Rimless, Groove** and select which edge type is required.
- 5- Place the frame in the tracer.
- 6- Press the main trace key. The tracer will begin tracing. When the tracer has finished, **Communicating...** will appear in the command window. When the command reads **Waiting...**, the file has been written to the export folder.



- 7- Open the Visionweb web site and complete a spectacle lens order.
- 8- Select a **Laboratory** and **Job Type**.
- 9- In the **Import Trace File** area, click **Browse**.
- 10- Select the trace file that you just created above step 6
- 11- Click **Open**. An image of the frame shape you traced will appear in the trace view window.
- 12- Complete the order then click **Send Order Now**



NOTE: To use the Visionweb Converter you it is required that you first install and configure the the converter on your computer (refer to FAQ: How to I Install the Visionweb Converter).