



Intelligent Blocker
ICE-1200



A light blue industrial machine with a large screen and a control panel. The screen displays the text "ICE-1200 Intelligent blocker".

ICE-1200
Intelligent blocker

Intelligent Blocker ICE-1200

Advanced technology with proven, reliable results

Stable and accurate blocking.

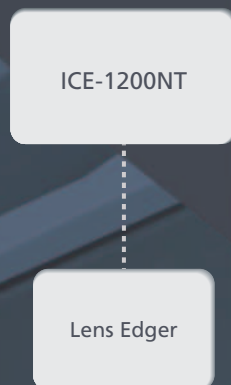
Intuitive screen for easy operation and spot-on results.

External memory for easy data management.

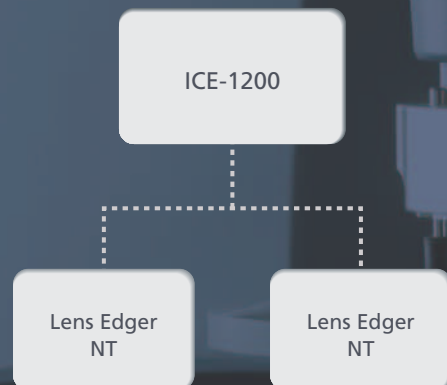
With assuredness, accuracy, high speed and simple operation, the ICE-1200 provides stable and reliable job processing.

System configurations

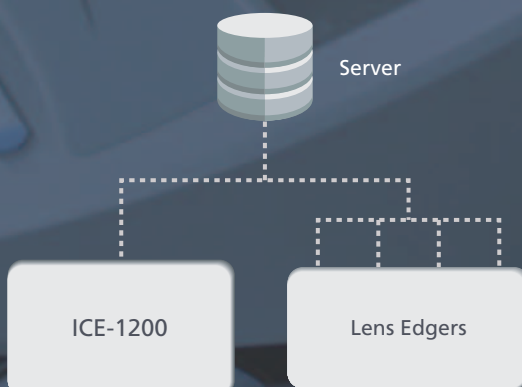
► Blocker Lex



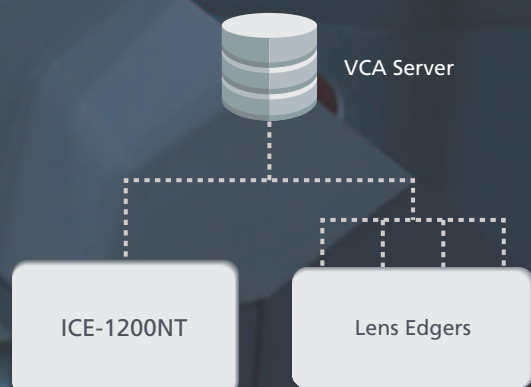
► Mini Lab



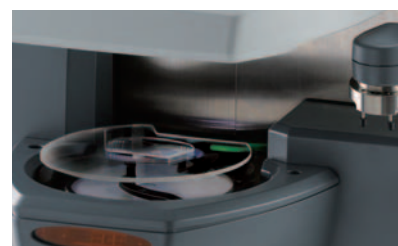
► Extended Lab



► Blocker VCA*



*The ICE-1200 is compatible with the VCA protocols.



Automatic lens measurement

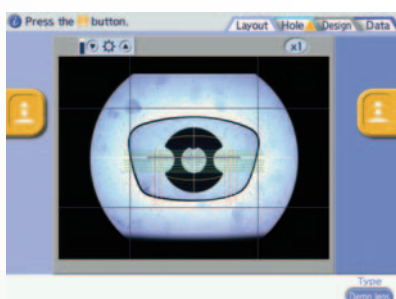
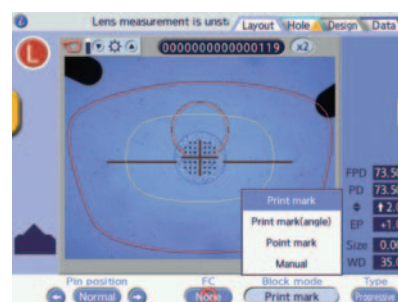
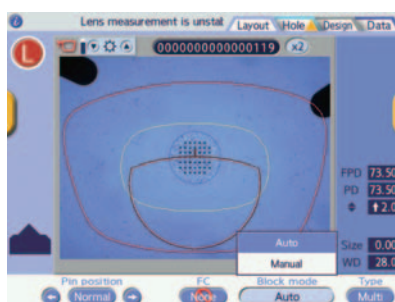
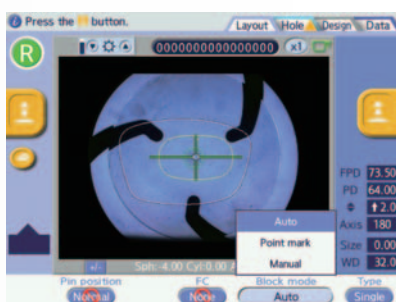
Four measurement methods can be selected depending on lens type.

Lens clamping with new mechanism

Newly designed lens clamp pins secure lens with optimal pressure and enable stable blocking.

Shape Imager measurement capture

In addition to auto measurement of lens shape and hole position, measurement of partial step lens is also possible.



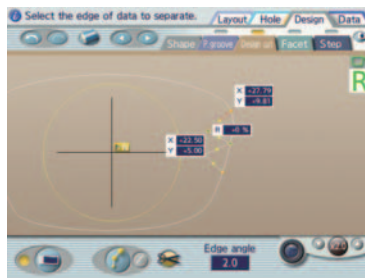
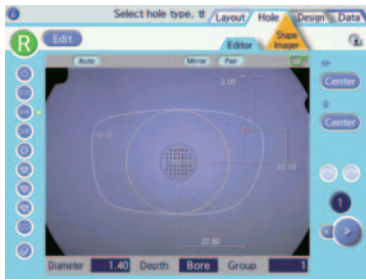
Single

Multi

Progressive

Demo

Shape Imager



Multicolor LCD touch panel with high resolution

8.4-inch multicolor display shows lens shape and layout information in real scale. Functions are represented with simple icons for intuitive operation.

Easy design function with stylus pen

Special design functions can be easily entered with stylus pen in each setting screen by magnifying the lens shape.

Hole Editor	Shape Editor
Partial Beveling	Design Cut
Facet	Step

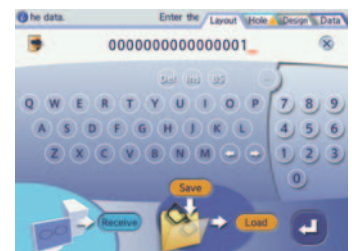
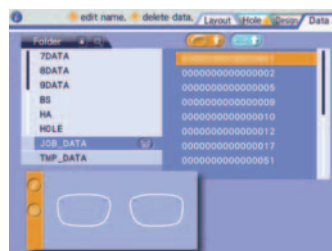
New multiple-frame tracer

New tracer provides accurate measurement of a wide array of frames including high-wrap style.



Simple "one-touch" demo lens tracing

Easy-load, magnetic pattern setting assembly provides single-step tracing operation.



Ergonomically located tracer

Built-in tracer, strategically positioned in the "upper level", facilitates easy frame setting.



Data management function

Data management allows for easy job / pattern storage and retrieval by conventional manufacturer or frame type.

QR code reader compatible

EMR data can be read via QR code from diagnostic instruments.

ICE-1200 Specifications

Model	ICE-1200	ICE-1200NT
Lens size	Dia. 85 mm or less	←
Layout span	FPD: 30.00 to 99.50 mm PD (or 1/2 PD): 30.00 to 99.50 mm (15.00 to 49.75 mm) Height of the optical center: 0 to ±15.0 mm Size adjustment: 0 to ±9.95 mm	←
Item to be entered	FPD (or DBL) PD (or 1/2 PD) Height of the optical center (frame center / optical center height, BT height, and PD height) Cylinder axis EP (height of the distance eye point of progressive lens) Lens size Lens material (CR-39, Hi-Index, Polycarbonate, Acrylic, Trivex, Urethane, Glass) Frame type (Metal, Plastic, Optyl, Nylon, Two point) Grinding mode selection CYL (+/- switching) Job code	←
Lens measuring mode	Single vision mode: Full auto / Mark detection Multi focal mode: Segment detection Progressive mode: Print mark / Print mark angle / Point mark Manual mode Demo lens mode	←
Shape imager function	Measurement range: 65.0 x 50.0 mm (±1.5 mm) Hole position: 0.01 mm increments Hole diameter: ø0.50 to 10.00 mm (0.01 mm increments)	←
Tracing unit Method FPD measurement Frame clamping Setting of stylus Measuring points Measurement accuracy	Built-in Automatic 3-D binocular tracing Available One-touch automatic clamping Switchable between automatic and semiautomatic 1,000 points Frame tracing ±0.05mm (circumference error with ø45 standard frame)	None
Blocking method	Auto	←
Interface	RS-232C - 3 ports 1 port for connection with a (first) lens edger 1 port for connection with a (second) lens edger 1 port for connection with a barcode scanner LAN (10 Base-T / 100 Base-Tx) - 1 built-in port	←
Power supply	AC 100 to 120 V or 230 V 50 / 60 Hz	←
Power consumption	110 VA	90 VA
Dimensions / Mass	325 (W) x 510 (D) x 345 (H) mm / 21 kg 12.8 (W) x 20.1 (D) x 13.6 (H)" / 46 lbs.	325 (W) x 510 (D) x 345 (H) mm / 17 kg 12.8 (W) x 20.1 (D) x 13.6 (H)" / 37 lbs.
Standard accessories	Power cord, RS-232C cable, Stylus pen, Spare fuse, Lens clamp, Frame change holder, Lens table cover, USB flash drive, Shape measurement table, Dust cover, Ferrite core for LAN cable, Accessory case, Standard frame, Standard pattern, Stylus cover, Pattern setting unit, Frame support attachment, Hexagonal wrench	Power cord, RS-232C cable, Stylus pen, Spare fuse, Lens clamp, Frame change holder, Lens table cover, USB flash drive, Shape measurement table, Dust cover, Ferrite core for LAN cable, Accessory case
Optional accessories	Barcode scanner (handy type), Barcode scanner (built-in type), Partial step package, Blower brush	←

Specifications and design are subject to change without notice.
The word “QR Code” is a registered trademark of DENSO WAVE INCORPORATED.
Trivex and CR-39 are registered trademarks of PPG Industries Ohio, Inc.
Optyl is a registered trademark of Safilo.
All other brand and product names are trademarks or registered trademarks of their respective companies.